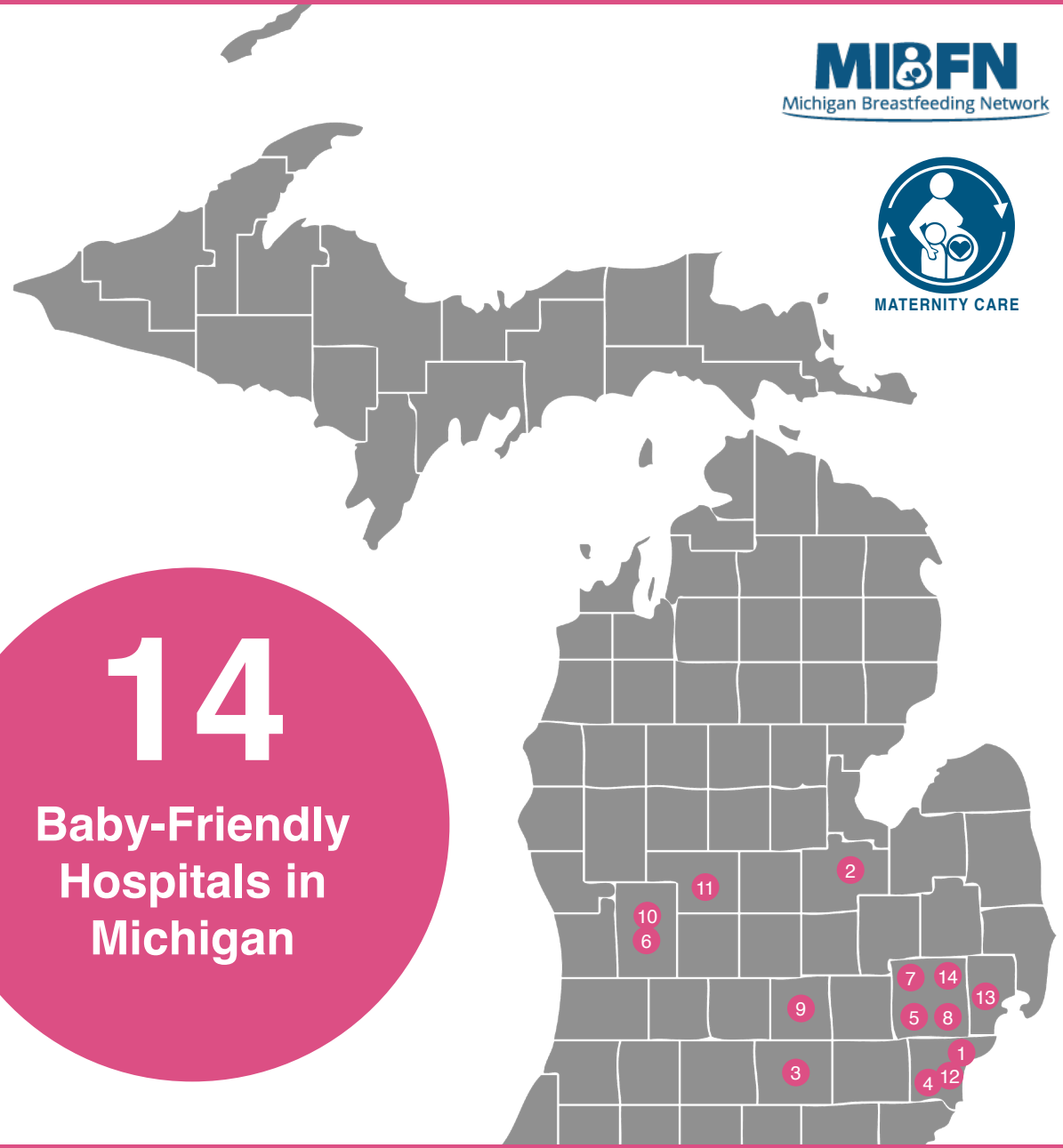


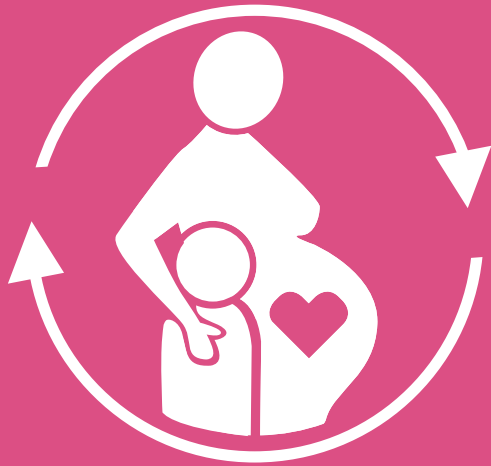
# MICHIGAN BABY-FRIENDLY HOSPITALS



**14**  
**Baby-Friendly  
Hospitals in  
Michigan**



- 1 Beaumont Hospital Grosse Pointe, Grosse Pointe, MI (03/12) Re-Designated 2017-2022
- 2 Covenant Medical Center, Saginaw, MI (04/15)
- 3 Henry Ford Allegiance Health, Jackson, MI (07/15)
- 4 Henry Ford Hospital, Detroit, MI (03/18)
- 5 Henry Ford West Bloomfield Hospital, West Bloomfield, MI (12/14)
- 6 Mercy Health Saint Mary's Hospital, Grand Rapids, MI (04/18)
- 7 Providence-Providence Park Hospital, Novi Campus, Novi, MI (12/15)
- 8 Providence-Providence Park Hospital, Southfield Campus, Southfield, MI (12/15)
- 9 Sparrow Hospital, Lansing, MI (03/15)
- 10 Spectrum Health Butterworth Hospital, Grand Rapids, MI (10/14)
- 11 Spectrum Health United Hospital, Greenville, MI (07/14)
- 12 St. John Hospital & Medical Center, Detroit, MI (07/14)
- 13 St. John Macomb-Oakland Hospital, Warren, MI (05/15)
- 14 St. Joseph Mercy Oakland, Pontiac, MI (03/15)



# Baby-Friendly Michigan

1 Mothers who deliver in Baby-Friendly Designated hospitals have **increased rates of breastfeeding initiation and exclusivity**, including mothers from disadvantaged groups.<sup>1</sup>

2 Babies born in Baby-Friendly Designated hospitals benefit from the developmental, digestive, and protective factors found in colostrum and breast milk, including **optimal nutrition, increased immunity, and lower infant morbidity**.<sup>2</sup>

3 **30.3 percent** of babies born in Michigan in 2015 were born at Baby-Friendly Designated hospitals.<sup>3</sup>

4 **MIBFN advocates** for all birthing hospitals in Michigan to implement the evidence based practices that align with Baby Friendly designation.

LEARN MORE

[www.mibreastfeeding.org](http://www.mibreastfeeding.org)



**MIBFN**

Michigan Breastfeeding Network

[www.mibreastfeeding.org/maternity-care](http://www.mibreastfeeding.org/maternity-care)

1. Munn, A., et al, "The Impact in the United States of the BFHI on Early Infant Health and Breastfeeding Outcomes," Breastfeeding Medicine 11 June: (2016): 222-230.
2. Scariati, PD, et al., "A Longitudinal Analysis of Infant Morbidity and the Extent of Breastfeeding in the United States," Pediatrics 99 June (1997): E5.
3. Centers for Disease Control and Prevention (CDC), Breastfeeding Report Card 2018, available at: <https://www.cdc.gov/breastfeeding/pdf/2018breastfeedingreportcard.pdf>.